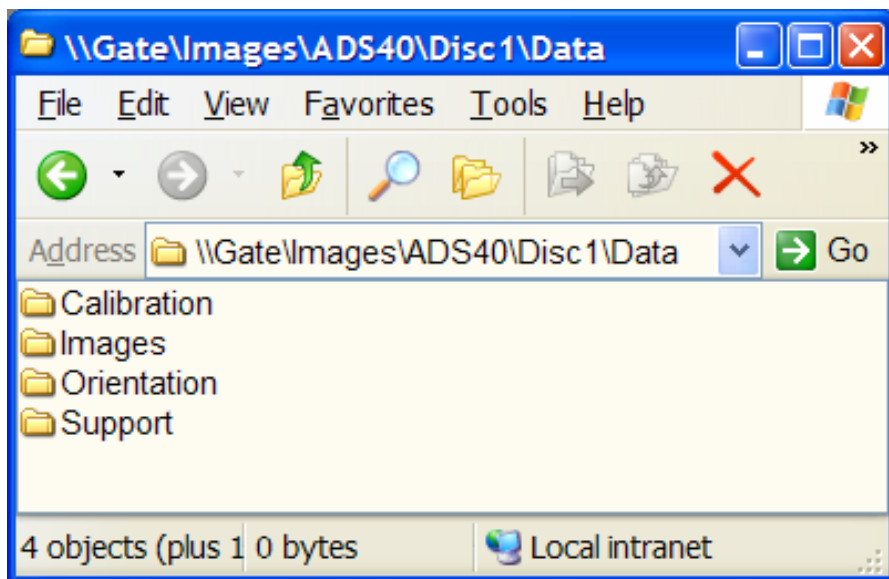


Support for Leica ADS40/ADS80 sensor in «Delta/Digitals» software

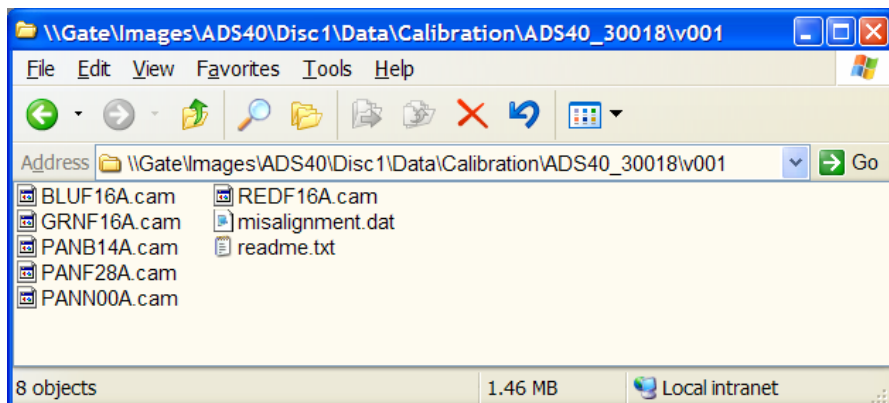
Images from Leica ADS40/80 pushbroom camera (**Level 1**) can be used for 3D stereo mapping, orthophoto, etc with [the latest version of Ged program](#).

Orientation data and project structure must be present as follows:

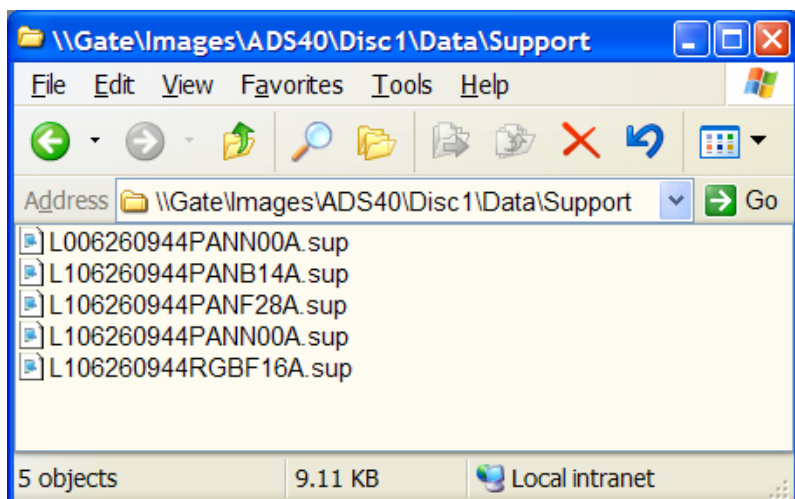


Images folder contains TIF images (L1, color or grayscale) from different camera channels. Outside (in level-up folder) or in folder with images must be present folders named as **Calibration**, **Orientation** and **Support**:

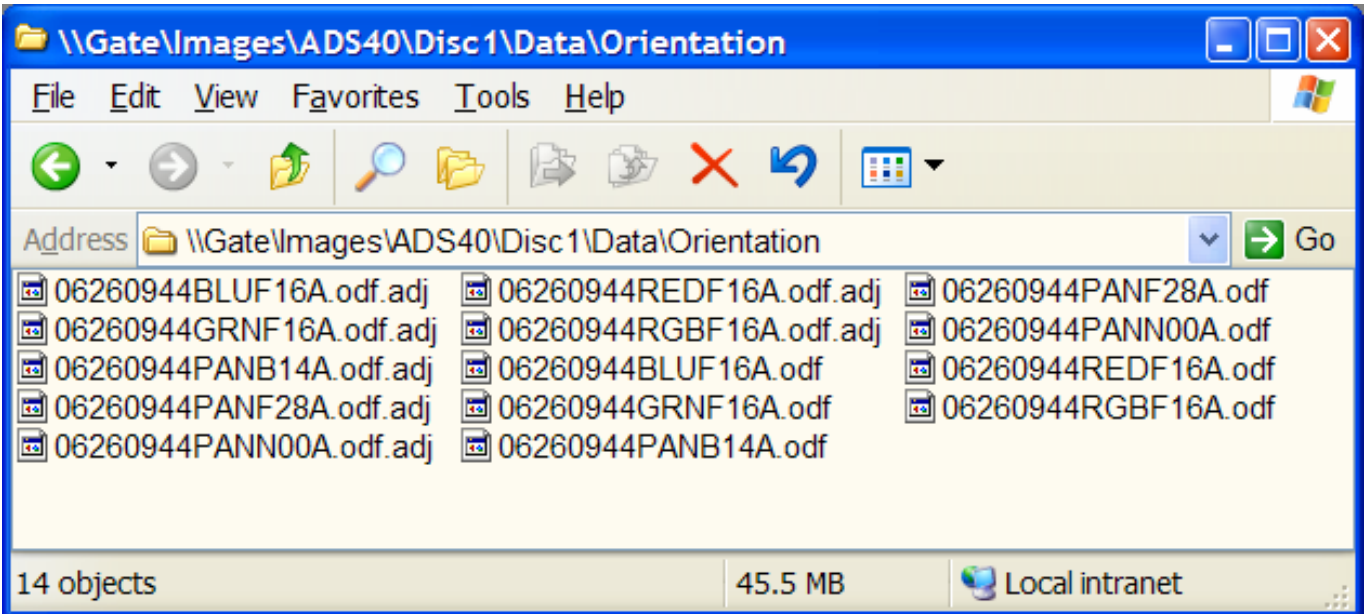
Calibration folder contains CAM-files with camera parameters:



Support folder contains SUP-files with basic information about every image:



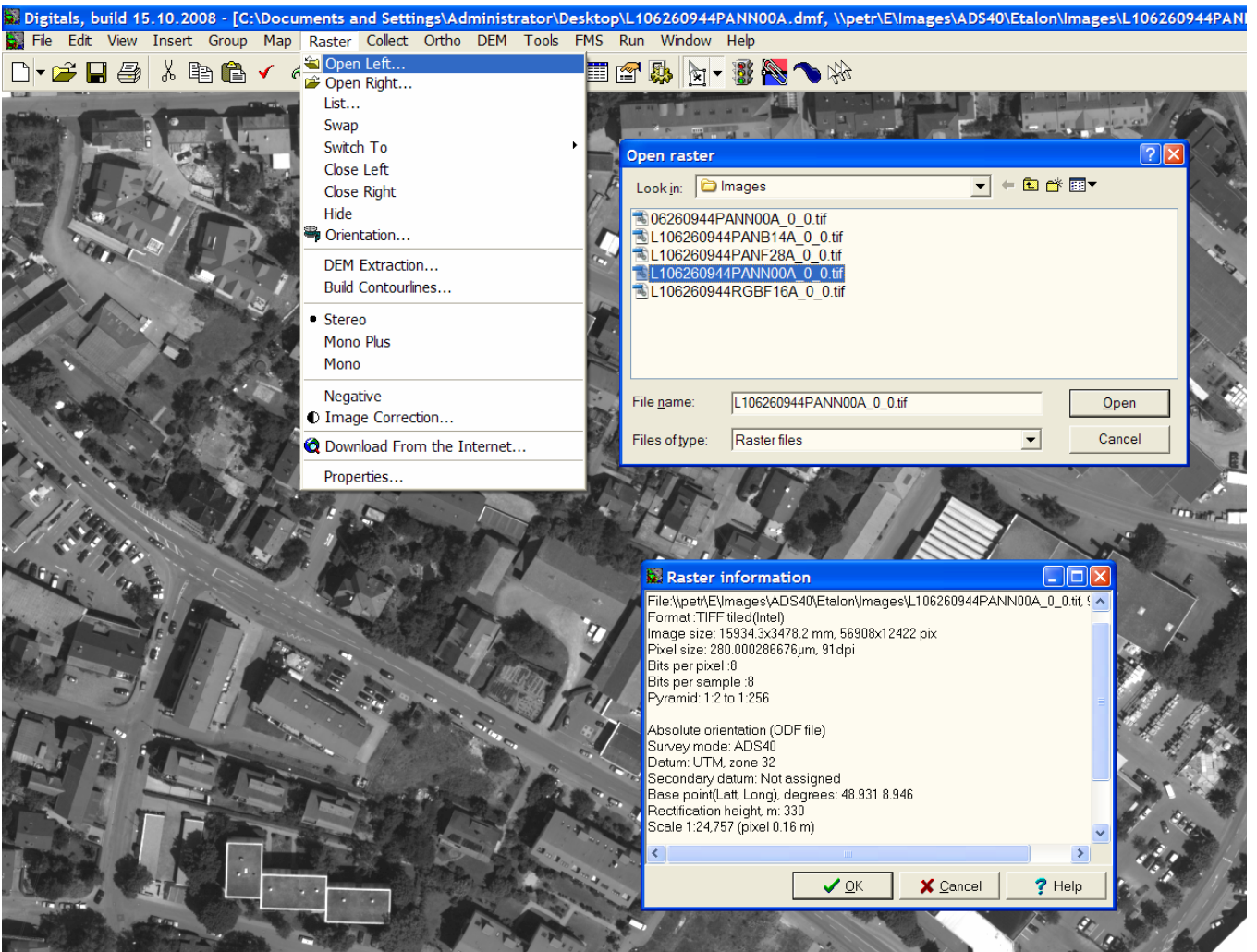
Orientation folder contains ODF-files with absolute orientation data for every image:



In case if adjusted (more accurate) absolute orientation data are present in file ***.ODF.ADJ** program will use these data instead of initial ***.ODF** files.

Loading ADS40 images to Delta/Digitals

To open georeferenced L1 raster images in Delta use **Raster|Open Left...**, **Raster|Open Right...** main menu commands. Then program will automatically locate and load appropriate **SUP/CAM** and **ODF** or **ODF.ADJ** files. Once opened the images are ready for stereo/mono mapping, etc.



We recommend to convert original images to TIF-tiled format and to create pyramids in **DIPedit** program to speed up performance.