

## Installation guide for 3D monitor Samsung 2233RZ with nVidia 3D Vision glasses and Quadro FX videocard

1. Download the latest driver for your Quadro FX video card and your OS (32/64 bit)

<http://www.nvidia.co.uk/Download/index.aspx?lang=en-uk>

### NVIDIA Driver Downloads

**Option 1: Manually find drivers for my NVIDIA products.**

Product Type:

Product Series:

Product:

Download Type:

Operating System:

Language:

2. Install the videocard driver

3. Download the latest 3D Vision driver for Quadro for your OS (32/64 bit)

<http://www.nvidia.co.uk/Download/index.aspx?lang=en-uk>

### NVIDIA Driver Downloads

**Option 1: Manually find drivers for my NVIDIA products.**

Product Type:

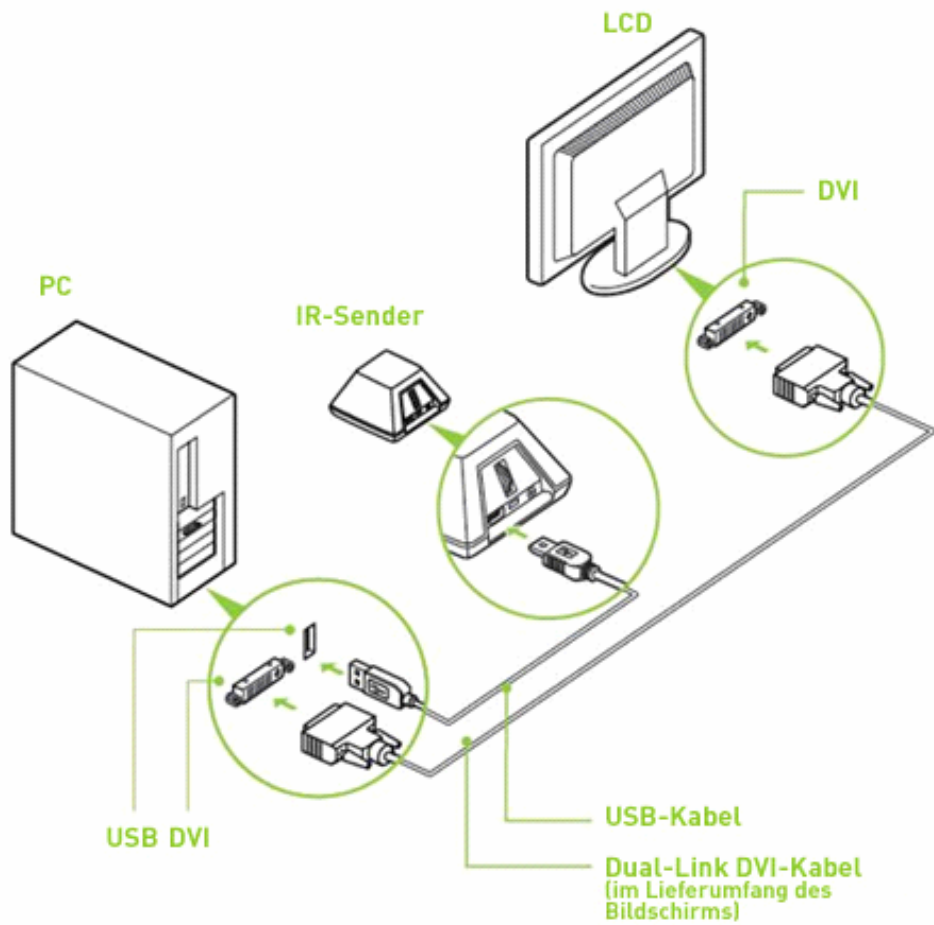
Product Series:

Product:

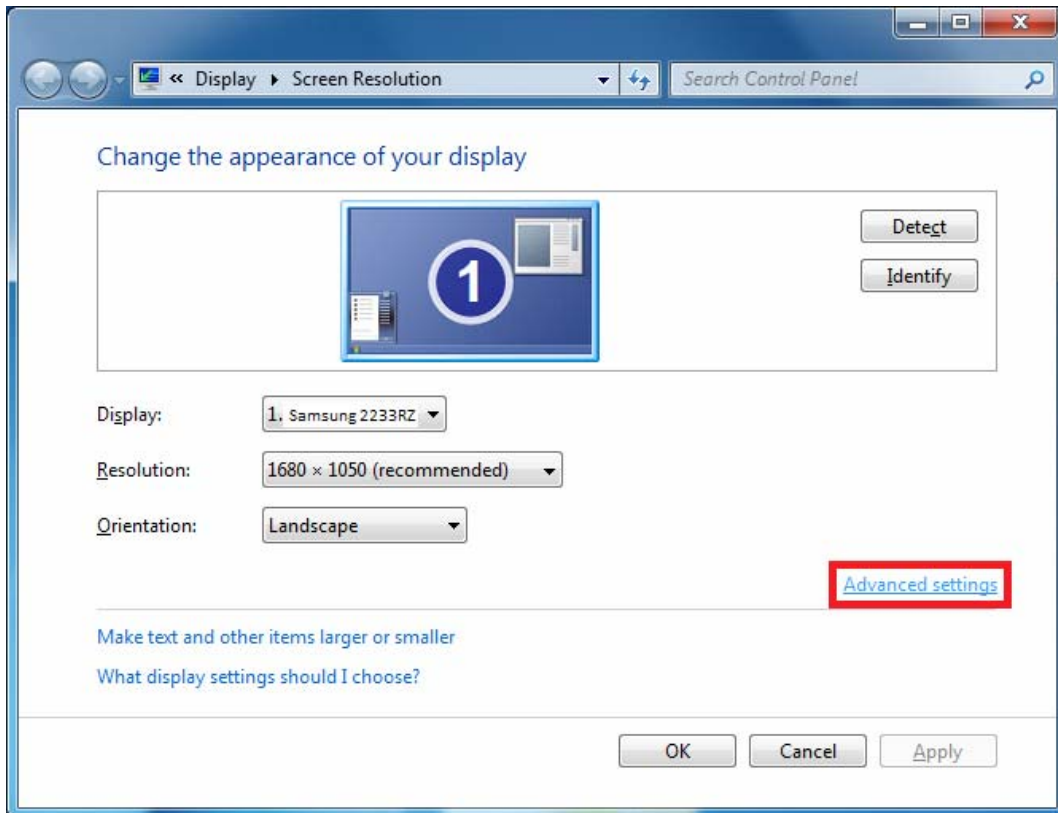
Operating System:

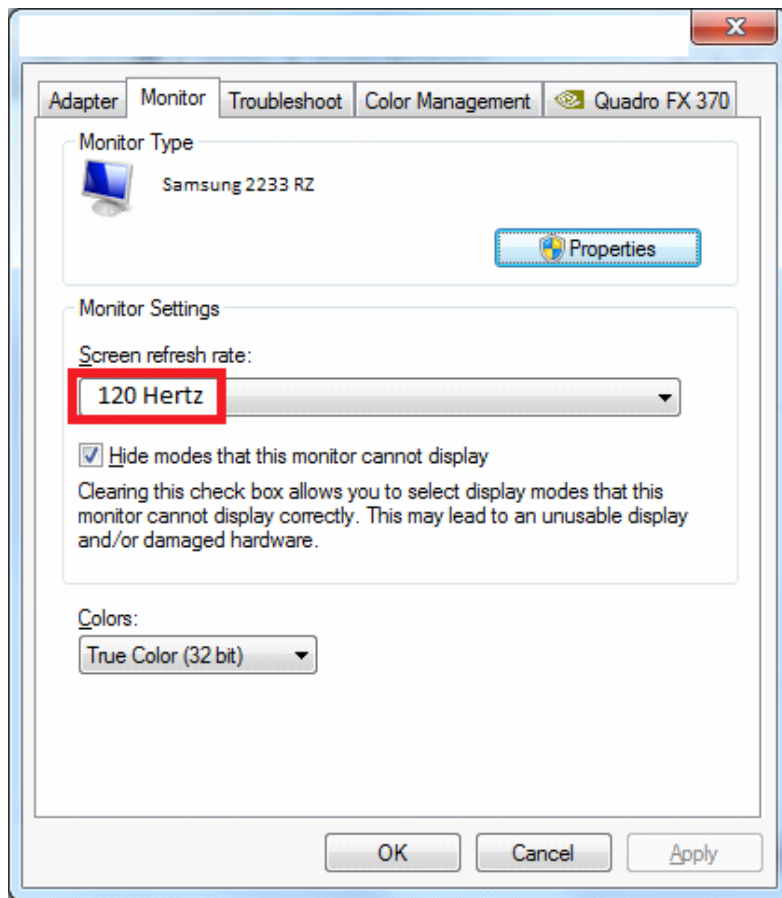
Language:

4. Install the 3D Vision driver, connect IR-emitter and turn your 3D Vision glasses on

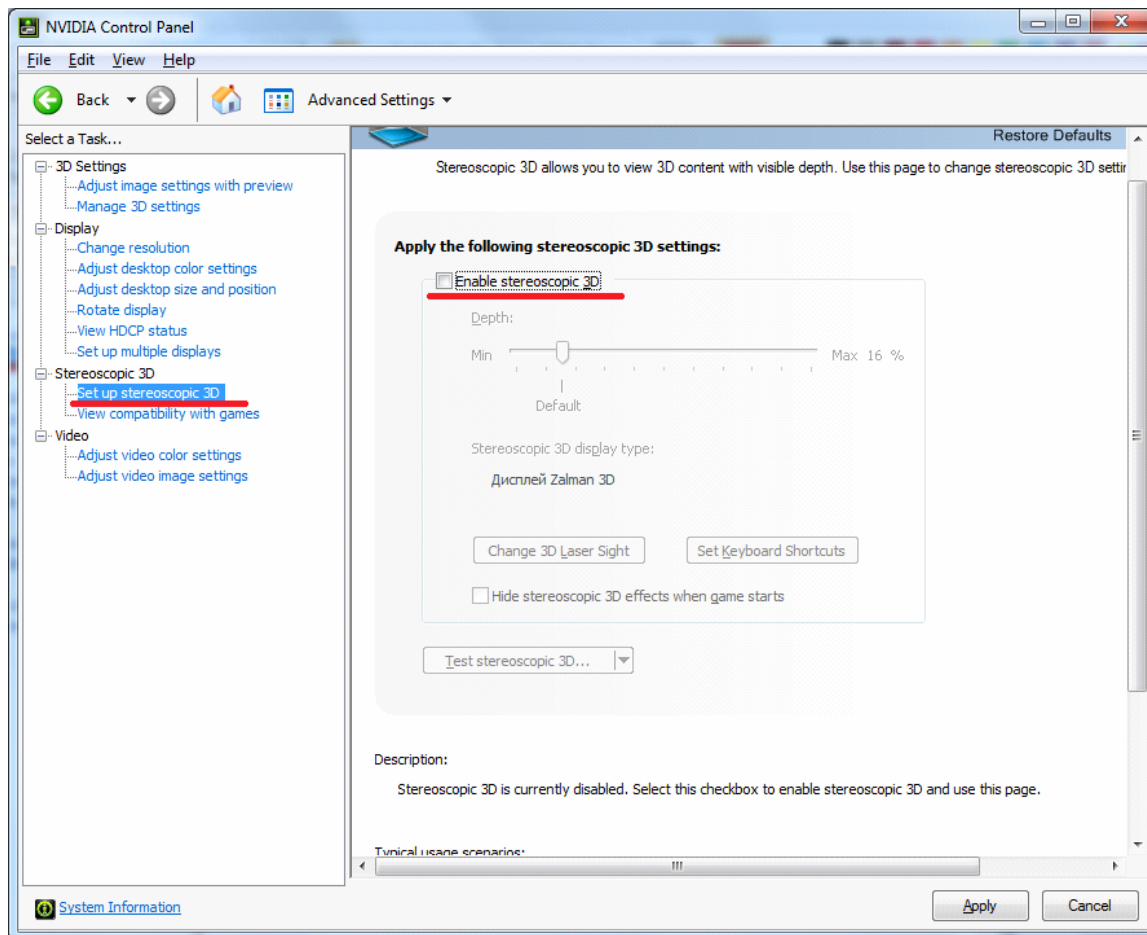


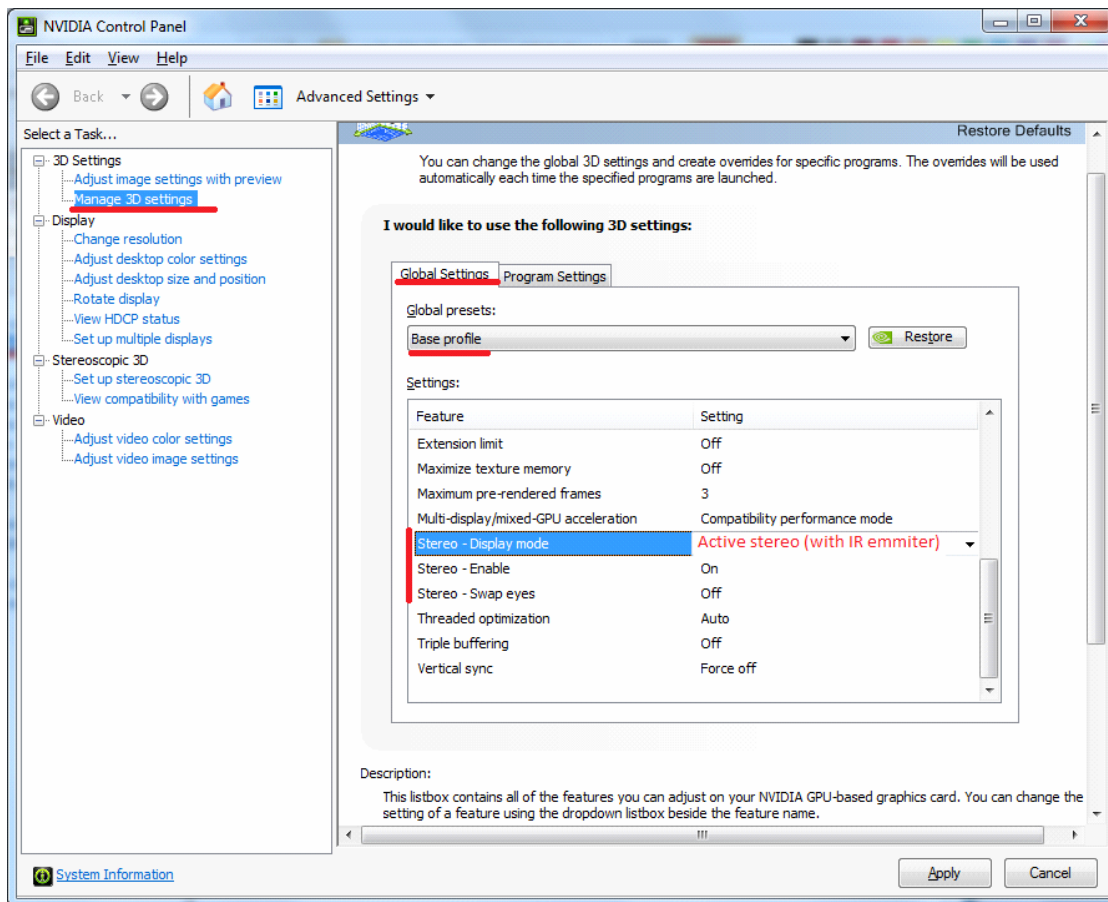
5. Set screen refresh rate to 120Hz using *Screen resolution-Advanced settings-Monitor*





## 6. Change 3D-settings in NVidia control panel as follow





## 7. Set Stereo interface to **Glasses (OpenGL)** in Ged's **Tools-Options-Hardware**

